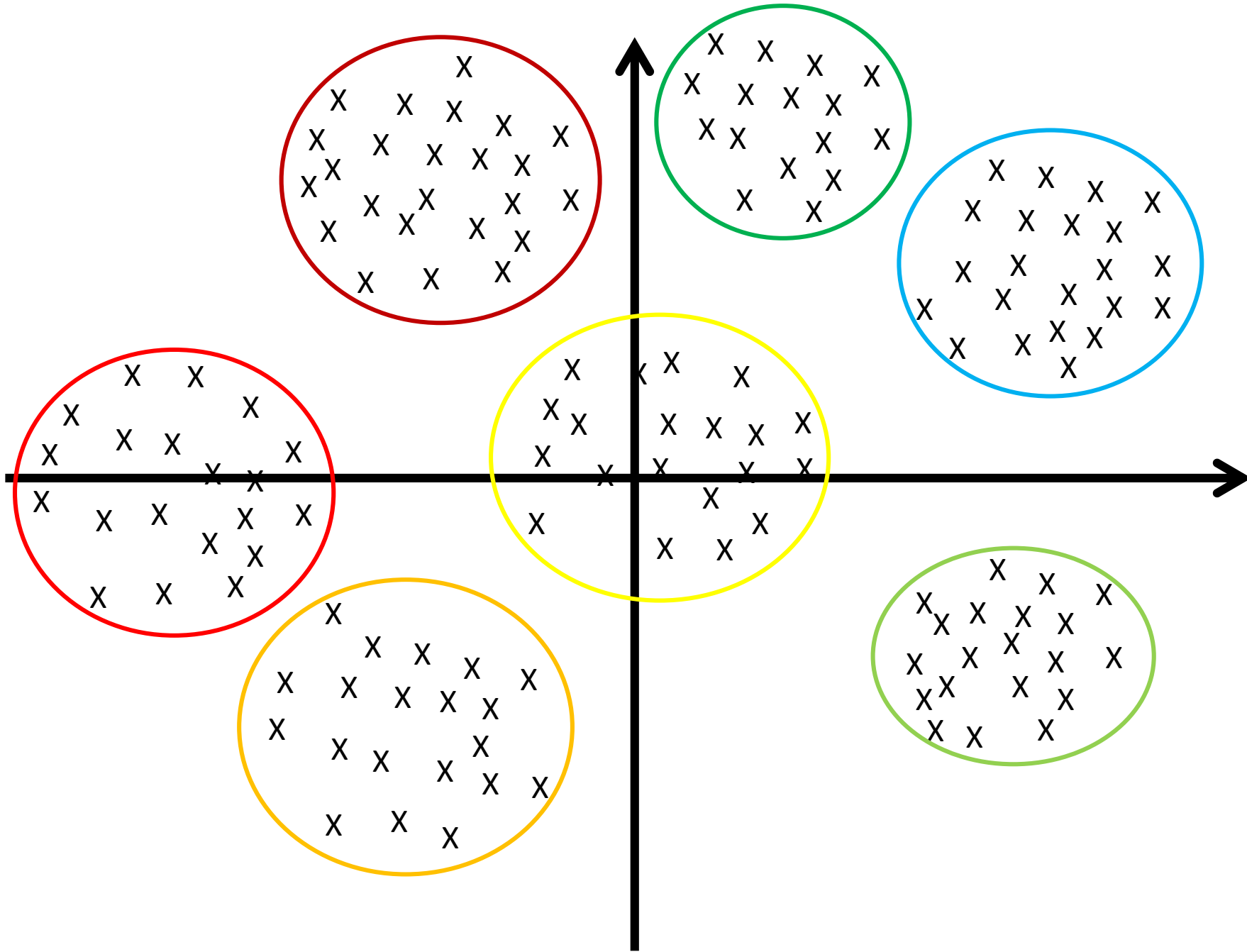




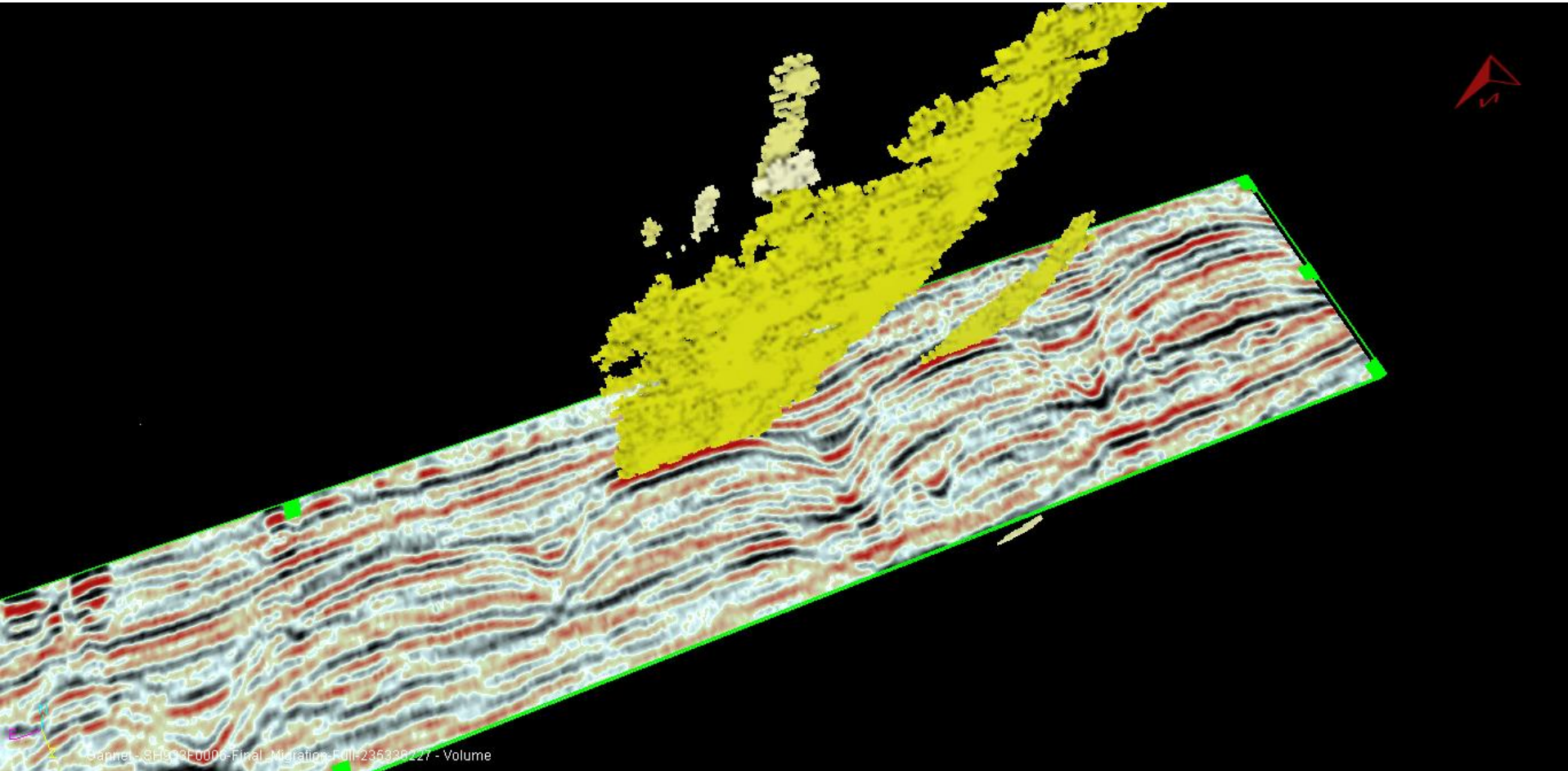
Reduce risk and cost  
by using multi-  
attribute seismic  
analysis and machine  
learning.

Tim Gibbons  
Geoscience Sales Consultant

**HOOLOCK  
CONSULTING**

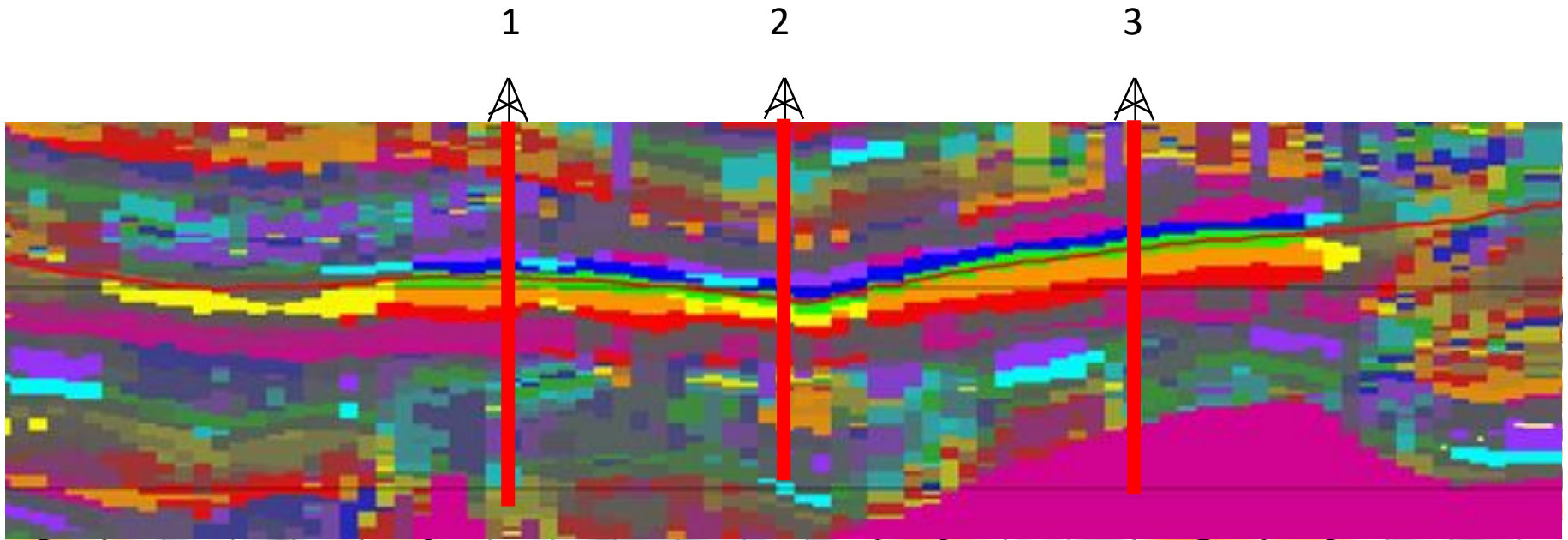


Are all amplitudes the same?

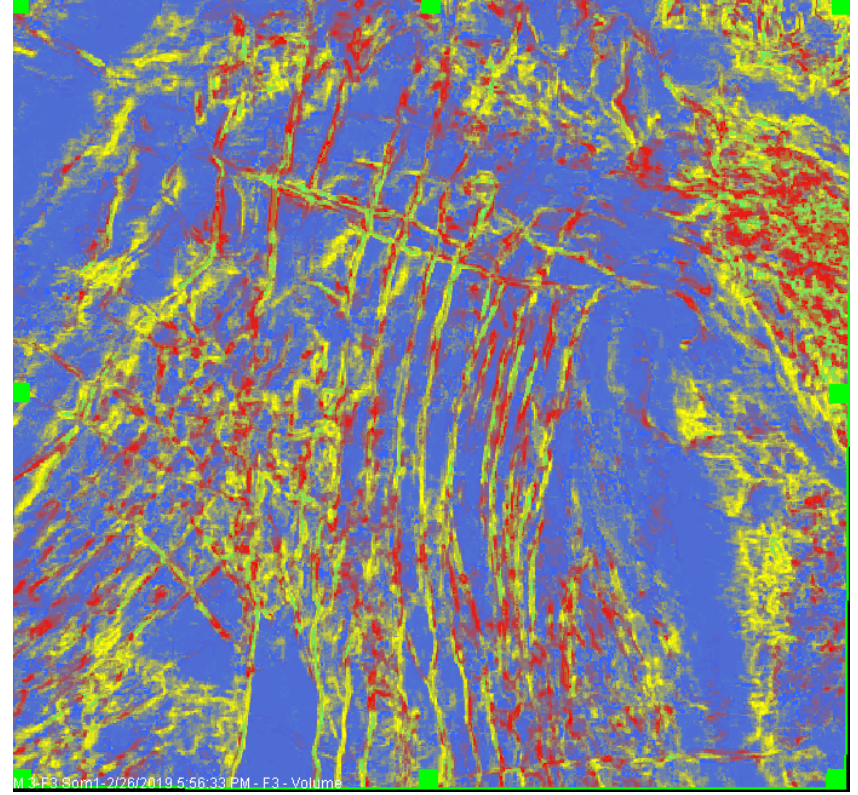
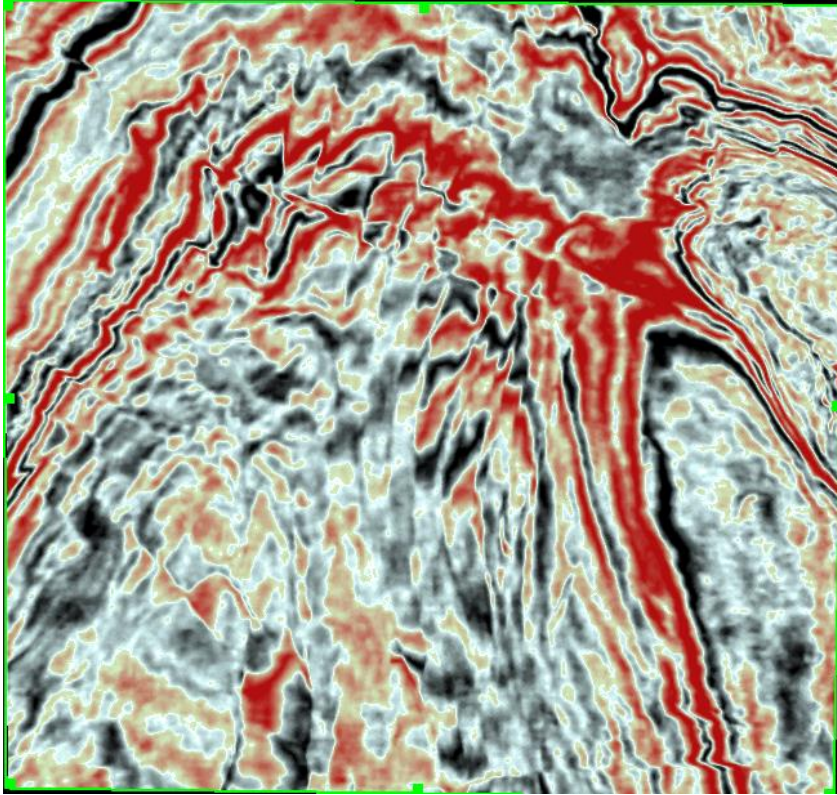




Which well was dry?

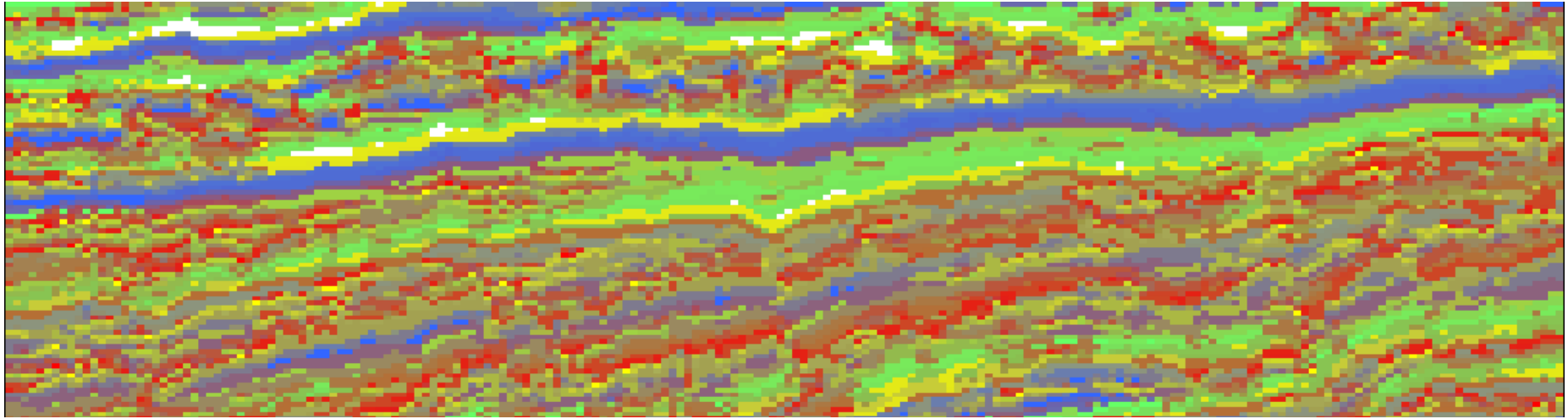
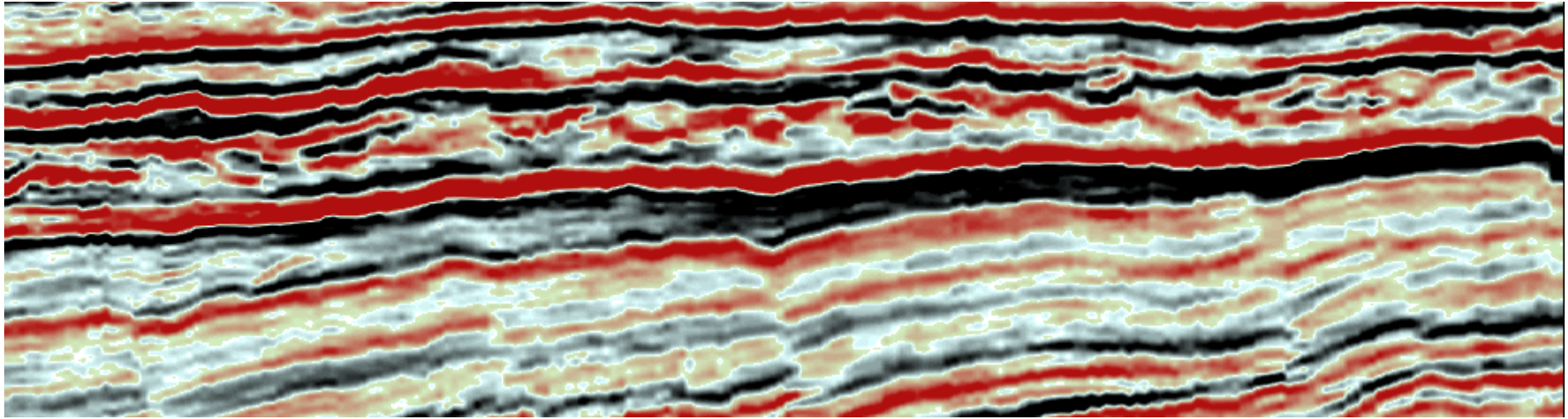


Which set of faults would you rather interpret?





Would you like to see below seismic resolution?



Thank You

Tim Gibbons

+44 7766 024602

[tim@hoolock-consulting.com](mailto:tim@hoolock-consulting.com)