

▼  
Seismic 2024, Aberdeen

SHEARWATER TASMAN – A FULLY  
INTEGRATED DUAL ROV VESSEL FOR OBN  
SURVEYS WITH SOURCE & STREAMER  
CAPABILITY. AN INDUSTRY FIRST.

Martin Prout

OBN Global Sales manager

shearwater



# SW TASMAN – THE CONVERSION PROJECT





# SW TASMAN



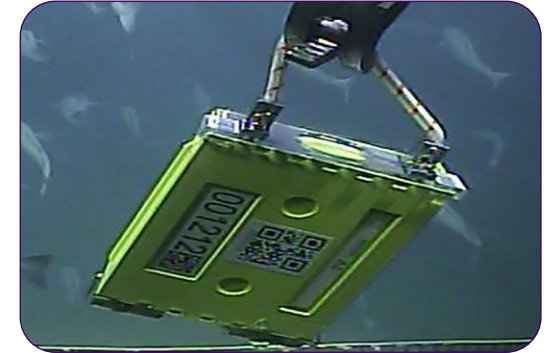
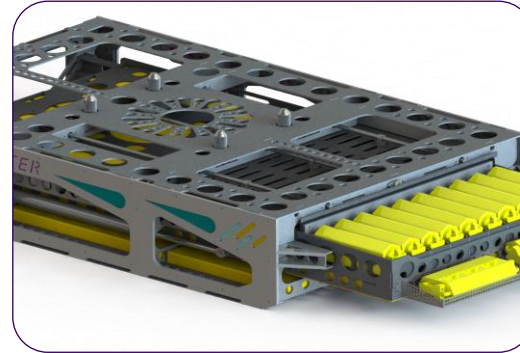
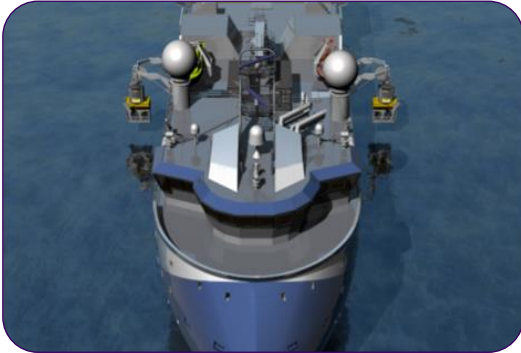
# SW TASMAN – THE CONVERSION PROJECT

SW TASMAN

Purpose Designed ROV

Bespoke ROV skid

Pearl



## SW TASMAN

- DP II X-Bow Seismic Vessel
- Equipped with dual ROV hangar
- Permanent vessel installed control systems
- Helideck
- Permanently installed a Launch and Recovery System (LARS)
- Long outreach
- A-frame strengthen for sideway loads

## Schilling HD WROV

- 2 x 3000m rated
- Thin umbilical
- TMS with extended tether capacity
- ROV installation future proofed

## Bespoke ROV skid

- Shearwater designed node skid
- High-capacity node storage

## Pearl Node

- Hydrophone & high-fidelity MEMS
- Compact
- Wireless
- 3000m depth
- 150 day battery



# SW TASMAN – THE CONVERSION PROJECT





## SUMMARY

- Vessel owned and operated by Shearwater.
- Dedicated ROV and personnel.
- ROV control room fully integrated.
- Only vessel with ROV and Source capability.
- Control of scheduling and maintenance.
- Fleet all focused on efficient operations.
- Reduced costs and increased efficiency.



shearwater