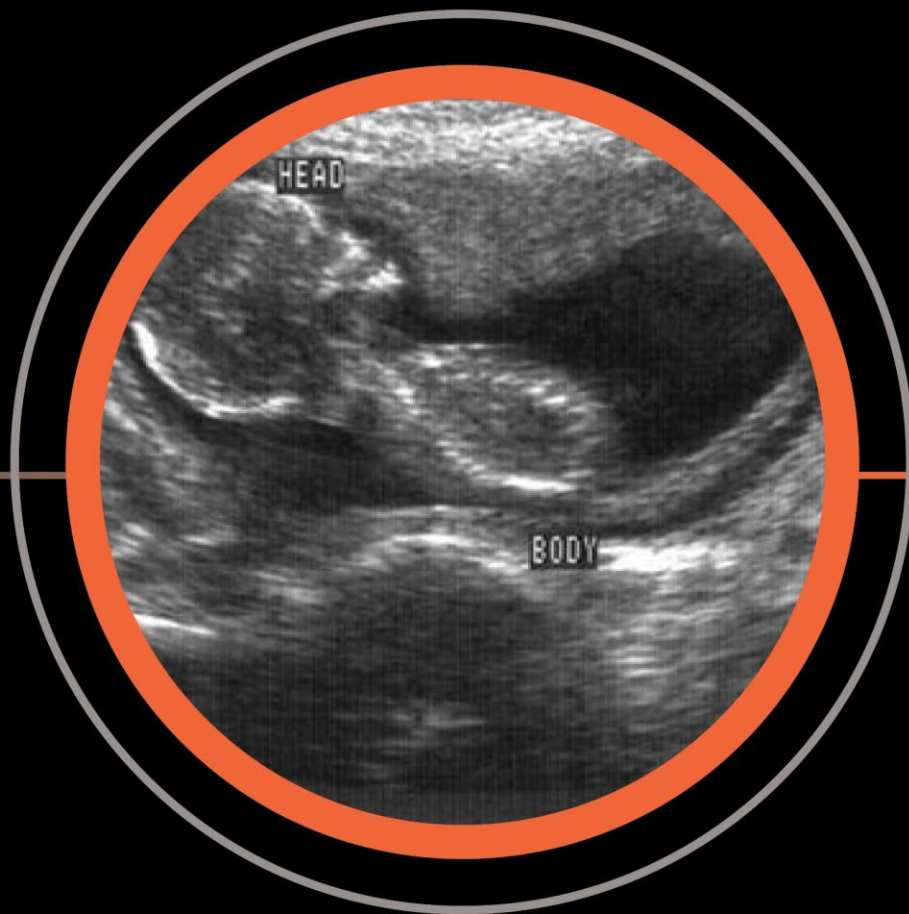

HIGH RESOLUTION ACOUSTIC IMAGING FOR DOWNHOLE DIAGNOSTICS

Vishal Sharma

Director – Sales, Scandinavia







ULTRASOUND 1980





ULTRASOUND 2022


SPECIFICATIONS

 DIAMETER 2.88" OD

 PRESSURE 15,000 psi

 TEMPERATURE 150 °C

 DATA CAPTURE 41 Gb/s

 STORAGE 2 TB

 RESOLUTION **0.01 in / 0.25mm**

 DELIVERY MEMORY OR REAL TIME

 LOGGING SPEED 9.1 m/min

H·A·D·E·S·R
ACOUSTIC IMAGING TECHNOLOGY



H·A·D·E·S·T
ACOUSTIC IMAGING TECHNOLOGY

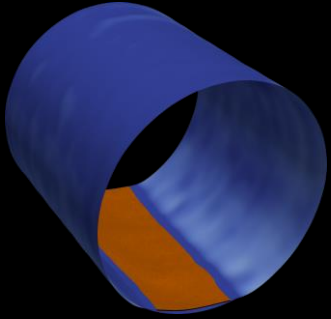


H·A·D·E·S·F
ACOUSTIC IMAGING TECHNOLOGY

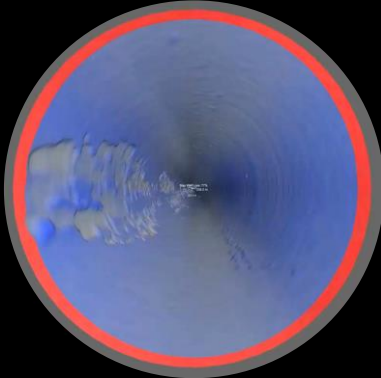


APPLICATIONS

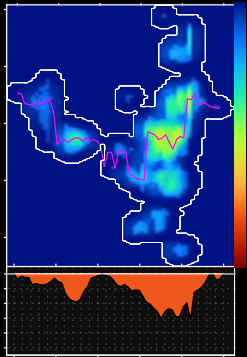
Well Integrity



Scale Quantification



ID & OD Corrosion

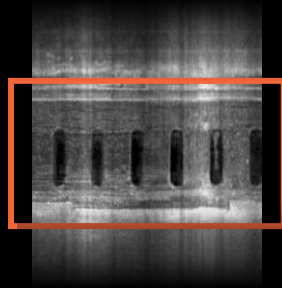


Burst Pressure

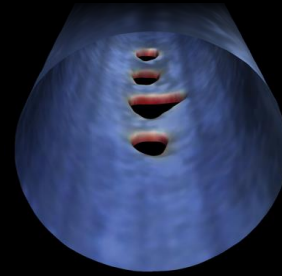


Liner Hanger

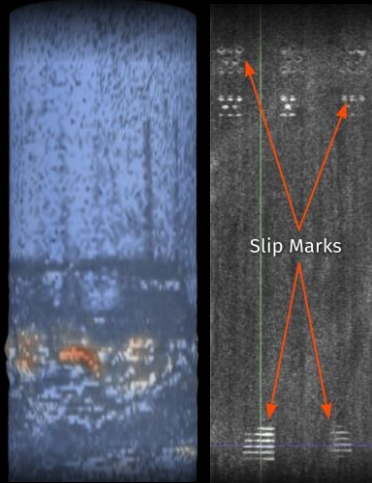
Completions Optimization



Sliding Sleeves



Perforation Analysis



Plug Damage

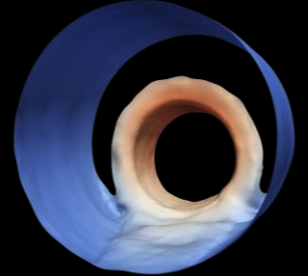


Fiber Clamp Mapping

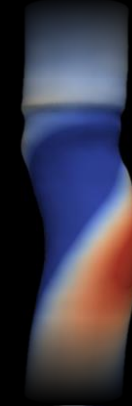
Intervention



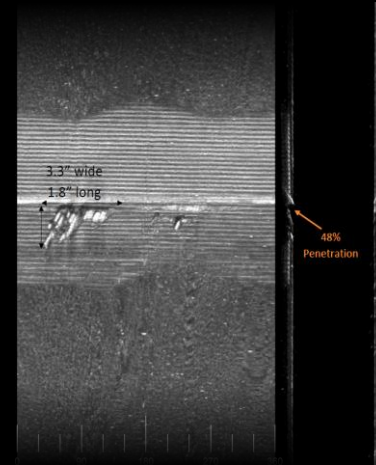
Downhole Valves



Obstructions



Deformation



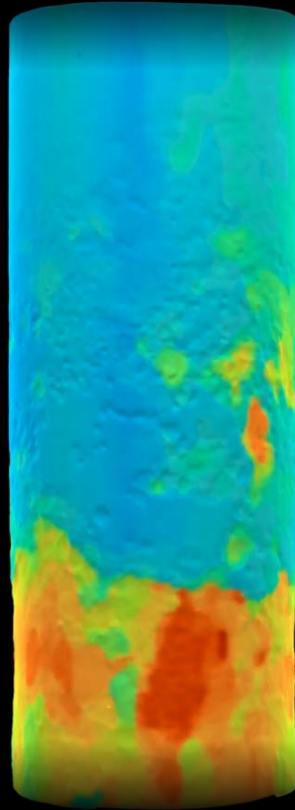
Connections

APPLICATIONS

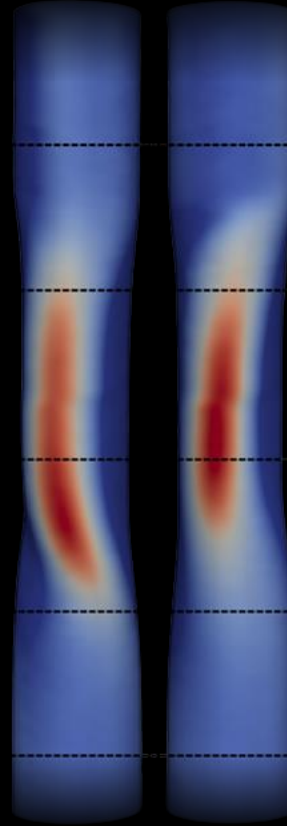
Slotted Liner



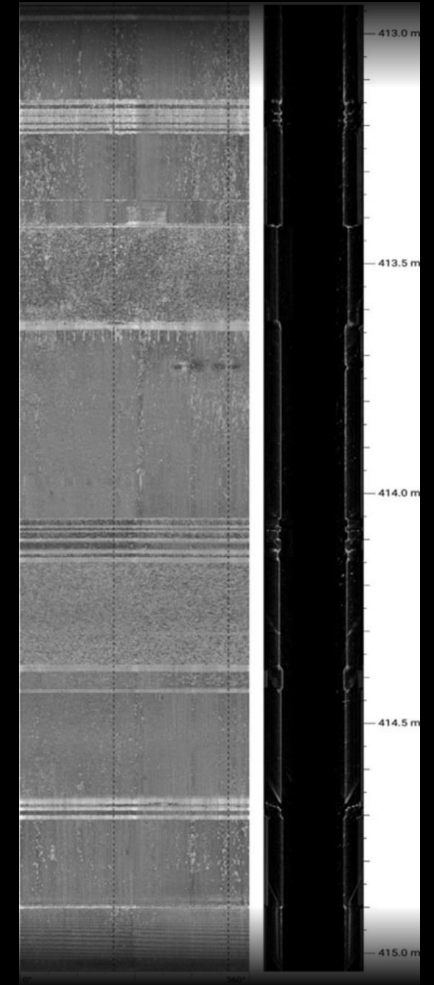
Outside Corrosion / Metal Loss



Ovalization / Collapsed pipe

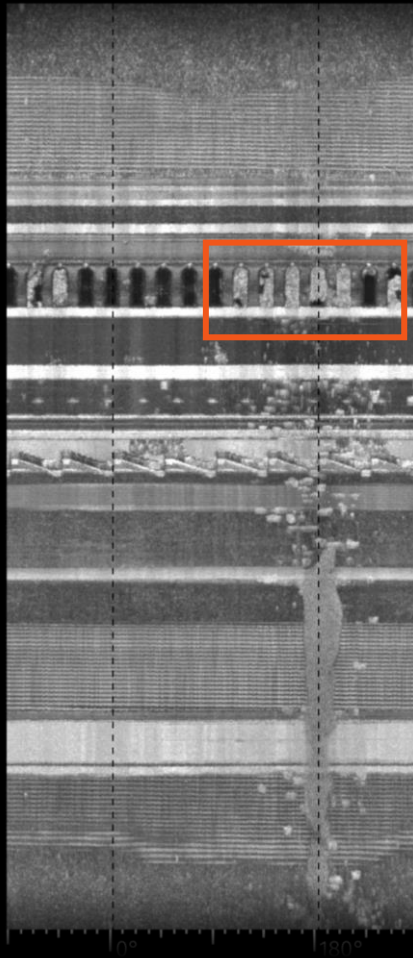


Downhole Safety Valves

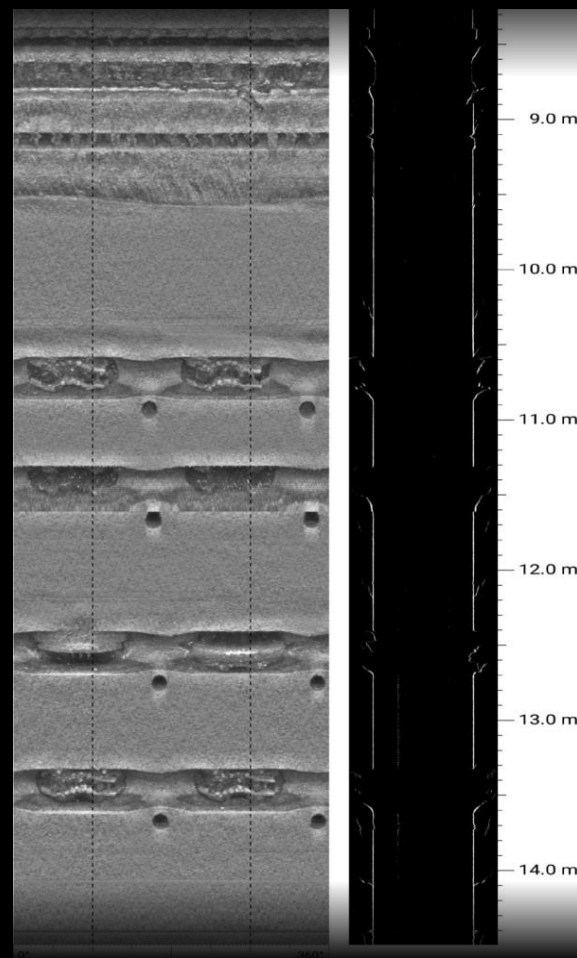


APPLICATIONS

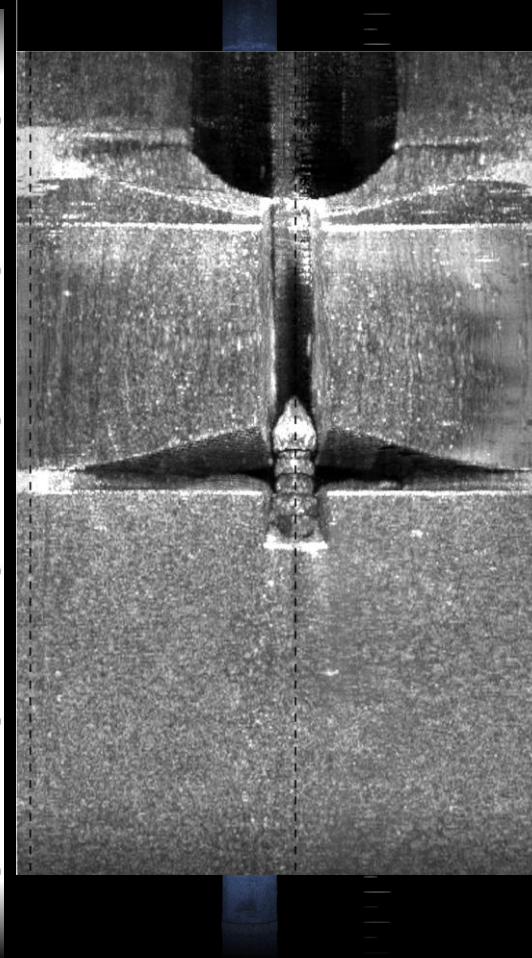
Sleeves



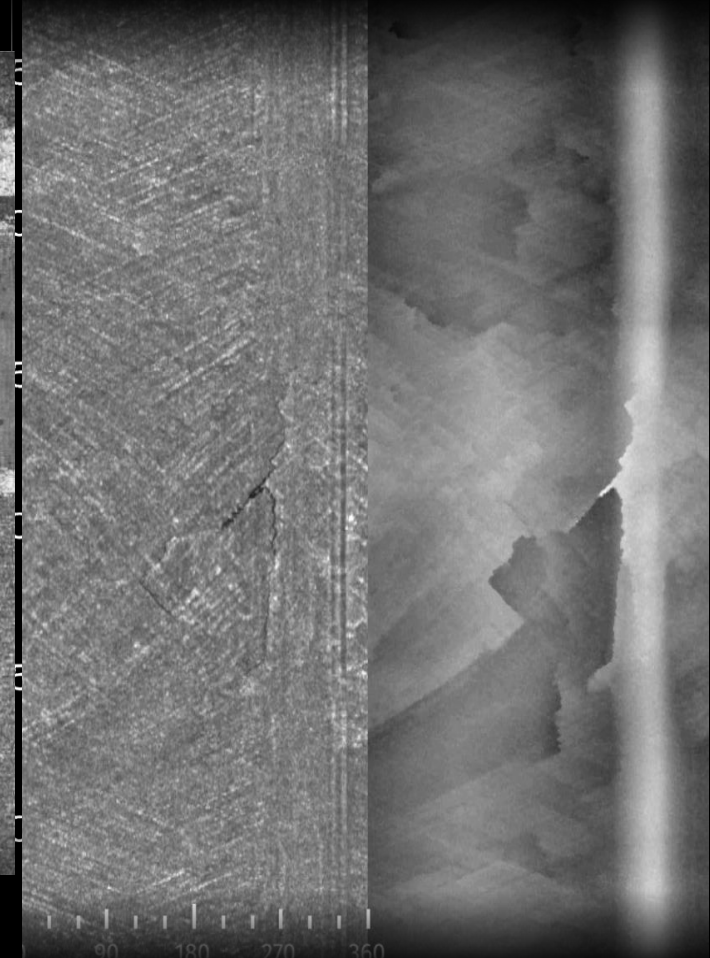
BOPs



Side Pocket Mandrel Inspection



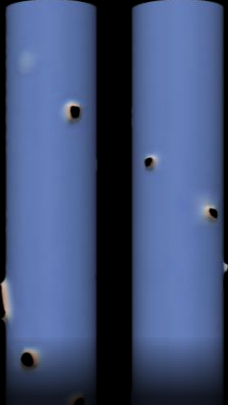
GRE tubing / Coated tubing inspection



The screenshot displays a web browser window with the DarkVision logo and a URL: <https://client.darkvisiontech.com/shared/view/05560daf-6cd1-4add-8036-97c478179393/40>. The main content area features a 3D model of a fishing profile, which is a tapered, cup-like shape. A vertical scale on the left side of the model is labeled 'DEPTH' and has tick marks at 0.00 mm, 20.00, 40.00, 60.00, 80.00, 100.00, 120.00, 140.00, 160.00, and 180.00. A 3D coordinate system with X, Y, and Z axes is visible in the bottom-left corner. A sidebar on the left contains various icons for navigation and interaction, including a play button, a list icon, a settings gear, a zoom-in/out icon, a camera icon, a zoom-in icon, a pencil icon, and a close icon. The version number 'v0.12.7' is displayed in the bottom-left corner of the viewer area.

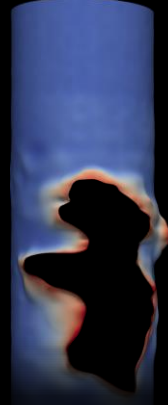
10X SPE PAPERS

SPE-199718



Perforation Erosion
Statistics on 30k Perfs

SPE-204412



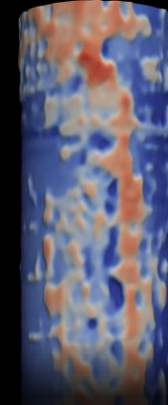
Plug Induced Casing
Damage Statistics

SPE-URTEC-5442



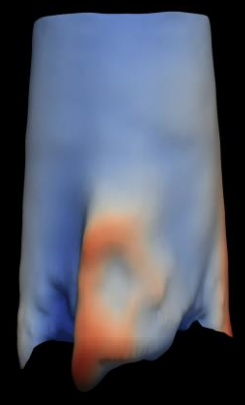
Complex Perforation
Shape Behavior

SPE-205933



Advanced
Well Integrity

SPE-209142



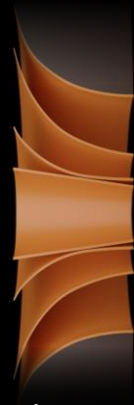
Robotics & Acoustic
Imaging of Obstructions

SPE-210010



Casing Thickness and
Burst Pressure

SPE-212908



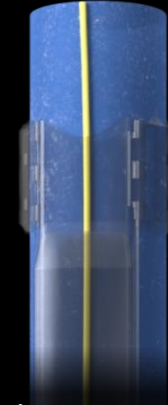
Perforation Entry and
Exit Hole Analysis

URTEC-2021-5442



Geometric Quantification
of Eroded Perforation

SPE-217819



Mapping Permanent
Fiber Optic Lines

SPE-217768



Refrac For Under-
Stimulated Stages



WHAT'S YOUR WELL HIDING?

Email: vishal.sharma@darkvisiontech.com

